

Across the Line

vol. 15, no. 1 • serving customers + distributors • spring 2001

New Relays for Low Level Signal Applications

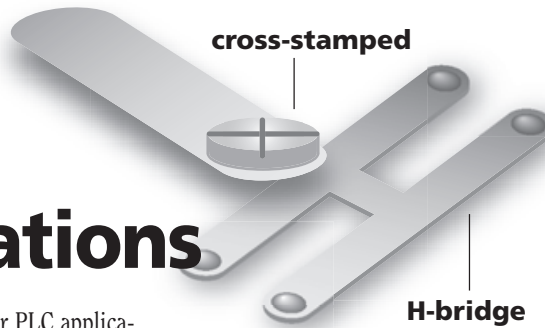
Today's control circuits often include a PLC, whose low-level signal values often require special consideration to ensure long-term reliability. Many control relays, including Sprecher + Schuh's CS7 and CS4 series, have "cross-stamped" contact tips. Even though cross-stamped contacts increase reliability where frequent operation can result in tack welding, they are not generally reliable for use with PLCs. Cross-stamped contacts can handle signals as low as 17 volts at 25mA. But when signal strength drops to 5mA, as

is often true for PLC applications, a different contact design must be used.

The new CS4-B control relay has H-bridge, bifurcated contacts that offer the highest reli-

The new CS4-B has H-bridge, bifurcated contacts that offer the highest reliability available...

ability available in an electro-mechanical control relay. This makes them ideal for PLC circuit



Cross-stamped contacts handle signals as low as 17V at 25mA, but H-bridge, bifurcated contacts can handle signals as low as 5mA, making them ideal for PLC applications.

interfaces. The base relay is available with four poles, however, the addition of auxiliary contacts (also rated to 5mA) can provide a six- or eight-pole relay.

A temporary catalog page is available describing the new CS4-B relays. Ask your Sprecher + Schuh representative about publication TCP-CS4-B. You can also download the page from our web Library, at ssusa.cc. ✓



Inexpensive 4-Pole Relay Introduced!

The introduction of CA7 contactors with four power poles represented a positive step in our ability to handle these applications, but it didn't go far enough. Now, customers' demand for a small and inexpen-

sive four power pole contactor that can handle 1HP @ 460 volts has been answered.

The CA4-9-M40 is a new addition to the already well-
Continued - see 4-POLE page 4



The CA4-9-M40 economically handles 1HP @ 460V



No one has time to read much these days, and I know you are no exception. You spend time only with publications that provide good information that you can use. We are interested in making *Across the Line* one of those select titles. Please think about what you'd like to see, and give us your specific ideas for content. You could earn a free Sprecher + Schuh golf shirt! See page 3 for further details.

Tiffany Estes
Managing Editor, *Across the Line*

inside

- 1 NEW CS4-B Relays
NEW 4-Pole Contactor
Editor's Note
- 2 NOW OPEN: S + S Web Library
Kitting Saves Time & Labor
- 3 Shirt Offer!
NEW EZ-rail Software Launch
- 4 NEW KTA Catalog
4-Pole Contactor (continued)
Welcome New Distributors
Test Your Knowledge

sprecher+schuh

15910 International Plaza Drive
Houston TX 77032-2439
Ph 281.442.9000 | Fx 800.739.7370
www.ssusa.cc

3610 Nashua Drive, Unit 10
Mississauga, Ontario L4V 1L2
Ph 905.677.7514 | Fx 905.677.7663
www.sscdn.cc

EZ-rail

Rail Building Software

Sprecher + Schuh has just released EZ-rail™, a free rail builder software program that makes selection, assembly and purchase of our new V7 terminal line quick and easy. Without a doubt, this is the best way to deal with the hundreds of piece-parts necessary to build terminal rail assemblies.

EZ-rail creates a graphic representation as you select each terminal component, adding end anchors, terminal covers and separation plates automatically.

The software creates a graphic representation of your rail as you select each terminal component. The component list con-

Terminal Velocity!

New Software Speeds Terminal Selection

tains both our traditional V7-W screw terminals and V7-R Secure-Clamp terminals, not to mention all accessories.

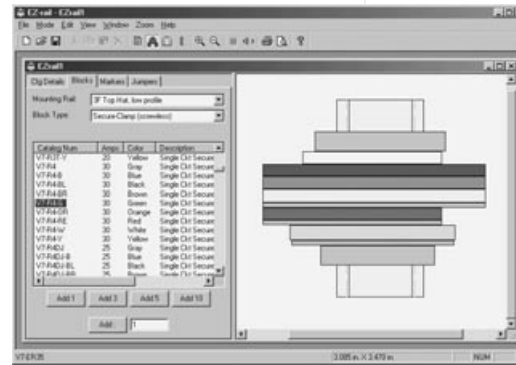
EZ-rail automatically adds appropriate end anchors, terminal covers and separation plates based on the terminals you select. As you build the rail, it's easy to rearrange terminals by just clicking and dragging them to a new location. If you make a mistake or change your mind, select the component(s) you don't want and delete them.

Double-click on any component and a dialog box appears providing specifications for the terminal. A list of all possible accessories is also included.

Once your terminals are in place, it's time to add jumpers and marking tags. First, select a group of terminals; then select the type of jumper required from the component list. A click of the mouse automatically adds the appropriate jumpers (or

markers) to your rail.

Once your rail is exactly as you like, you can choose to print



Double-click on any component and a dialog box appears, providing detailed specifications for the terminal. When you are satisfied with the rail, you can print a variety of reports or place an order with speed and ease.

a variety of reports. A simple list of components, a consolidated bill of materials and a list price report make sure that all parts are ordered correctly and in the shortest possible time. The EZ-rail file can also be e-mailed to your favorite Sprecher + Schuh distributor for ordering or rail building.

EZ-rail is available now on our new V7 PowerPak CD (Literature #V7-CD-2) or at www.ssusa.cc/public/railware ✓



EZ-rail is available now on our new V7 PowerPak CD (Literature #V7-CD-2) or at www.ssusa.cc/public/railware



Send your ideas to:

Sprecher + Schuh
Attn: Managing Editor, ATL
15910 International Plaza Drive
Houston, TX 77032

or: tbestes@ssusa.cc

Be sure to mark your correspondence with the words "Shirt Offer."



Shirts for 2¢

Is there something you'd like to learn more about in a future issue of *ATL*, or maybe something you'd like to see on our web site? Share your ideas with us (be specific!) and you could earn a handsome Sprecher + Schuh shirt like this one! We're also very interested in success stories from our customers and distributors involving Sprecher + Schuh products. Drop me a line (tbestes@ssusa.cc), and if your idea is worthy of a spiffy new shirt, I'll see that you get one.

Sprecher + Schuh reserves discretion as to which suggestions justify reward, based on their appropriateness, feasibility, and whether the suggested item is one already in progress. Distributors, customers, salespeople and reps are eligible to participate.

sprecher + schuh

welcome
new
distributors

Component Specialties, Inc.
Aurora, CO

Clayton Controls
Costa Mesa, CA

Industrial Control Corp.
Sunnyvale, CA

**Industrial Control
Specialists, Ltd.**
Manchester, NH

Reserve Motion
Strongsville, OH

A New Catalog That Can Save You Money!

Sprecher + Schuh's KT7 Motor Circuit Controllers are some of the most versatile and technologically advanced control products available today. They can reduce panel space, simplify installations and eliminate the need for more expensive equipment. The newest version of the KT7 Motor Circuit Controller catalog is now available from your Sprecher + Schuh representative or from our web site at

www.ssusa.cc. This version fills in the blanks on some pending UL ratings and includes an entire section covering enclosed KT7s. Ask for publication # KT7-CAT-REV1. ✓



4-Pole

Continued from page 1

established CA4 line of mini-contactors. This AC or DC coil device is available with four normally open power poles rated to 20 amperes (AC-1). Up to four additional auxiliary contacts may be added to the front (top). List price for the new contactor is \$52 (\$69 CDN).

A temporary catalog page is now available, describing new CA4 four-pole contactors. Ask your Sprecher + Schuh representative about publication TCP-CA4. You can also download the page from our web Library. ✓

Across the Line is published by the US Division of Sprecher + Schuh, Inc. It is distributed at no charge to Sprecher + Schuh customers, distributors, manufacturers representatives and employees in the US and Canada.

Address corrections, mailing list additions or deletions, editorial comments and other correspondence should be sent to:

Tiffany Estes
Managing Editor, *ATL*
Sprecher + Schuh
15910 Int'l Plaza Drive
Houston, TX 77032

test your knowledge!

The following questions (except No. 10) are based on this month's *Across the Line* newsletter. The first 50 correct answers received by mail will win a free Sprecher + Schuh leather luggage tag!

NAME: _____

COMPANY: _____ PHONE: _____

ADDRESS: _____

CITY: _____ STATE: _____ ZIP: _____

- The new CS4-B relay can handle signal strengths as low as: _____
- This feature makes the CS4-B relay ideal for what application? _____
- Our new 4-pole contactor can handle what horsepower at 460V? _____
- Where can you download S + S wiring diagrams, dimension drawings and AutoCAD files? _____
- What can you save by kitting products commonly ordered together? _____
- What can you earn for submitting great ideas for future *ATLs*? _____
- EZ-rail makes _____, _____, and _____ of V7 terminals quick and easy.
- You can get EZ-rail software by ordering what literature number? _____
- The new KT7 catalog provides what additional information? _____
- According to *Money* magazine, who, on average, earns more – a major league baseball umpire or an NFL referee? _____

Mail quiz to Sprecher + Schuh, 15910 International Plaza Drive, Houston, TX USA 77032 — ATTN: Marketing Communications.

sprecher+
schuh

15910 International Plaza Drive
Houston TX 77032-2439
Ph 281.442.9000 | Fx 800.739.7370
www.ssusa.cc

3610 Nashua Drive, Unit 10
Mississauga, Ontario L4V 1L2
Ph 905.677.7514 | Fx 905.677.7663
www.sscdn.cc